



**Otium**  
NATURE IN A POT

**koberg**

Our quality guarantees your success.



**Otium**  
NATURE IN A POT

[info@otium-design.com](mailto:info@otium-design.com)

[www.otium-design.com](http://www.otium-design.com)



# NATURE

At Otium we choose for the rotational moulding manufacturing technique, this technique allows us to work with a very durable polyethylene plastic with many advantages. The Polyethylene products

are quite light and therefore easy to manipulate but sufficiently strong, even for prolonged outdoor use. Moreover, it is not sensitive to frost or extreme heat and can be 100% recycled. Otium chooses to use quality raw materials to guarantee the color fastness.

## IN A POT

Due to the combination of polyethylene and rotational moulding, we can offer a variety of colors. Besides the many colors of the products we often provide different finishing options so the customer can compose something that perfectly fits his or her environment.







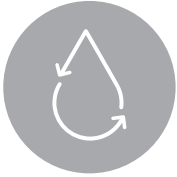
## FLOWERPOTS

- 8 Pendulum
- 16 Amphora's
- 22 Quadris
- 32 Cylindrus | Basso
- 40 Olla's
- 52 Murus

## FURNITURE

- 60 Olla Tables
- 68 Cubus
- 76 Cylindrus | Basso

## INDEX



### DRAINAGE SYSTEM

**PROVIDED IN ALL OTIUM POTS**

Potted plants need to be showcased in flower-pots equipped with a good drainage system in the event of over watering, whether from natural rainfall or over watering by an eager gardener.

Unless excess water can filter through the soil and drain away from the roots of your potted plants, the roots may develop root rot if they are exposed to standing water for an extended period of time. Root rot will eventually cause your potted plant to wither and die since it will rob the plant of the ability to draw moisture and nutrients from the soil.

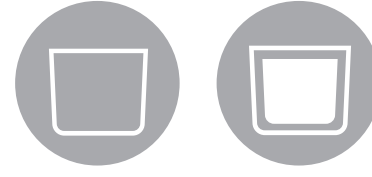


### EXTRA WEIGHT SYSTEM

**ONLY FOR OLLA 135 & MURUS 27-90**

Otium Olla135 and Murus (27&90) are provided with an extra weight system. The system is simply a closable opening. Through the free space between the two walls there is enough space to pour sand or gravel in the pot.

If enough weight is inserted, the pot will have extra stability and will not fall over in strong winds.



### SINGLE WALL DOUBLE WALL

The air gap between the two walls creates a layer of isolation for the roots of the plant.

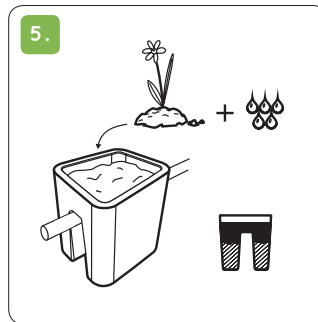
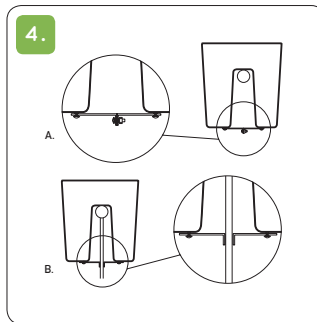
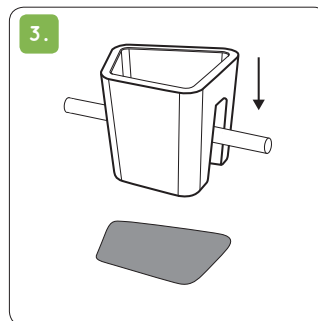
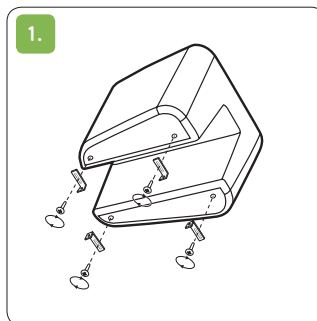
Double wall pots are protected for heavy sun burn of the outside layer and prevent the roots from burning.





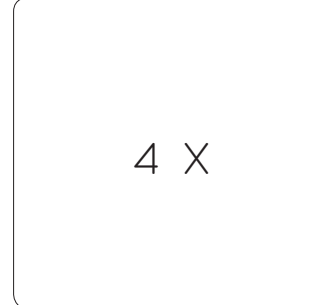
## HANGING SYSTEM

FOR PENDULUM



## WHEEL SYSTEM

FOR QUADRIS 40 LONG



1

*by Maxime Szeff***PENDULUM**

pendulum square . pendulum long

The PENDULUM railing planter is an aesthetic solution for a spatial problem: how can we bring nature close to the limited space of a balcony. We also wanted a solution for creating extra privacy on the terrace.

The PENDULUM railing planter answers to these requirements. Rotational-moulded durable, recyclable and impact resistant polypropylene, we realised an atypical and switchable asymmetrical shape in a generous size for creating a plant landscape. By combining the two dimensions, the flower pots can be placed in a variety of arrangements in order to give the balcony a contemporary and personal finishing. The PENDULUM planters can also be placed on the ground.

We came up with an additional volume as seasoning container for an urban garden environment and drainage to avoid suffocation of the roots.

The PENDULUM railing planter is the last Otium realisation of "NATURE IN A POT"





Pendulum designed by Maxime Szyf

Maxime Szyf is a designer since childhood. After product design studies in Antwerp, he worked at Samsonite and Verhaert (design office in Kruikebeke), before starting his own firm in 1998. As a creative partner with Yellow Window MAXIMALdesign he works on products in various categories. Four pillars are central to innovation: is the product functional and feasible? Is the product economically

viable and can it be sold for a fair price? Is the product acceptable in terms of sustainability and ethics? Is the product attractive and aesthetically distilled? These four aspects of added value must be met before a product can be introduced on the market ...

[www.maximaldesign.com](http://www.maximaldesign.com) - [www.yellowwindow.com](http://www.yellowwindow.com)

PENDULUM SQUARE, RED, RD







PENDULUM SQUARE, BLACK, BLA



PENDULUM LONG, BLACK, BLA

# PENDULUM SQUARE

Solid, square and robust, but not hard or sharp. Thanks to its rounded corners the Pendulum Square has a soft look. Tough, but still a cookie.



The Otium PENDULUM SQUARE is a high quality single walled polyethylene railing planter. The planter is provided with a security system to prevent the planter falling of the railing.

width  
41,7 cm

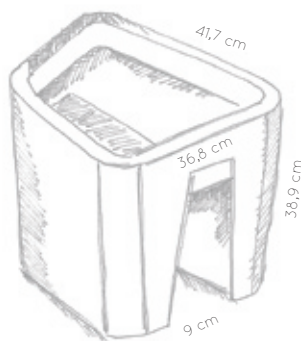
height  
38,9 cm



Material Compound Polyethylene - Prolonged UV resistant - Frost resistant - Maintain its strength at high temperatures - Insulation from frost - Protection for heat (roots can not burn) - Nice finish of the product



WHT BLA RD ORNG BRN LG ANT CAP OG GR





# PENDULUM LONG

Extended elegance with soft curves. This long brother of the Pendulum Square offers even more green space. Perfectly tailored for those who think that choosing is losing.



The Otium PENDULUM LONG is a high quality single walled polyethylene railing planter. The planter is provided with a security system to prevent the planter falling of the railing.

width  
75,3 cm

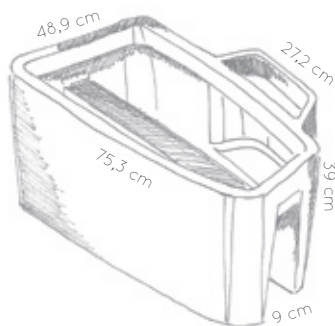
height  
39 cm



Material Compound Polyethylene - Prolonged UV resistant -  
Frost resistant - Maintain its strength at high temperatures -  
Insulation from frost - Protection for heat (roots can not burn)  
- Nice finish of the product



WHT BLA RD ORNG BRN LG ANT CAP OG GR



2

AMPHORA'S

amphora 45 . amphora 75



These Amphoras are as elegant as plants reaching for the sun. Available in large or small and as a result the perfect couple. Because sometimes less is not more.







AMPHORA 45, CAPPUCINO, CAP

AMPHORA 75, ANTHRACITE, ANT





AMPHORA 45, RED, RD



AMPHORA 75, ANTHRACITE, ANT



# AMPHORA 45

Otium amphora 45 is high quality double walled polyethylene planter. Otium drainage system makes sure there is adequate drainage for the plants. When planting inside the drainage system can be closed by using the supplied screw cap with rubber seal.

diameter  
40 cm

height  
45 cm



Material Compound Polyethylene - Prolonged UV resistant - Frost resistant - Maintain its strength at high temperatures - double Wall: Insulation from frost - Protection for heat (roots can not burn) - Nice finish of the product



WHT



BLA



RD



ORNG



BRN



LG



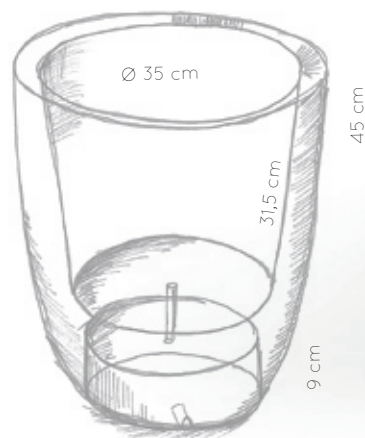
ANT



CAP



OG



# AMPHORA 75

The Otium Amphora 75 is the bigger brother of the Otium Amphora 45. Both flowerpots look perfectly next to each other. Outdoor and indoor use are possible. It's basic shape, provided with smooth curves make the Amphora 75 the perfect addition to the Otium Family.

diameter  
40 cm

height  
75 cm



Material Compound Polyethylene - Prolonged UV resistant - Frost resistant - Maintain its strength at high temperatures - double Wall: Insulation from frost - Protection for heat (roots can not burn) - Nice finish of the product



WHT



BLA



RD



ORNG



BRN



LG



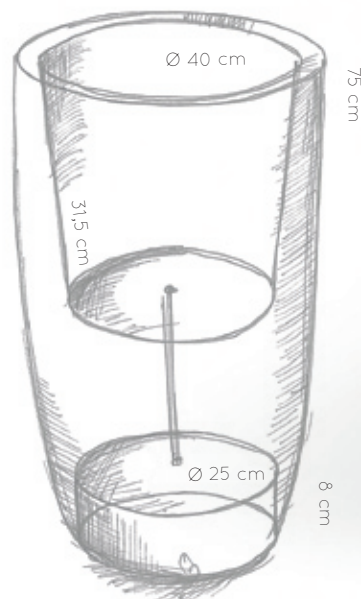
ANT



CAP



OG




3

QUADRIS

quadris 40 . quadris Long 40 . quadris 60





A modern outdoor patio scene featuring three identical, bright green, square planters arranged in a row. Each planter holds a small, well-manicured olive tree. The planters are positioned on a light-colored stone or concrete patio. In the background, there is a dark brown, modular outdoor sofa with dark cushions. Behind the sofa is a wall made of vertical wooden slats. To the right, a glass railing is visible. In the foreground, a swimming pool reflects the planters, the sofa, and the wall. A white line with a dot points from the text label to the middle planter.

QUADRI 60, OLIVE GREEN, OG





# QUADRIS 40

Design is in the detail. So this basic mould has rounded corners, as organic as the flowers and plants which it discretely puts in the spotlight. Inside as well as outside.





The Otium QUADRIS 40 is a high quality double walled polyethylene planter. Otium drainage system makes sure there is adequate drainage for the plants. When planting inside, the drainage system can be closed by using the supplied screw cap with rubber seal.

dimensions  
44 x 44 cm

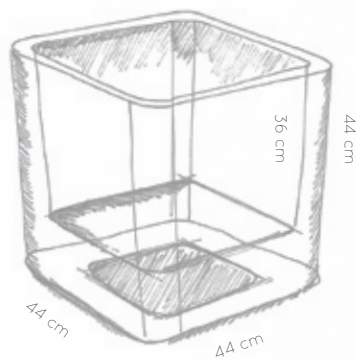
height  
44 cm



Material Compound Polyethylene - Prolonged UV resistant - Frost resistant - Maintain its strength at high temperatures - double Wall: Insulation from frost - Protection for heat (roots can not burn) - Nice finish of the product



WHT BLA RD ORNG BRN LG ANT CAP OG GR



# QUADRI 40 LONG

When you like to play with volume and shape, this Quadris is a perfect addition to your collection. It can be combined with other Quadris family members as well as with the rest of the Otium family. And yes, when throwing a party you can even use it as a bucket for bottles.



The Otium QUADRIS 40 long is a high quality double walled polyethylene planter. Otium drainage system makes sure there is adequate drainage for the plants. When planting inside, the drainage system can be closed by using the supplied screw cap with rubber seal.

dimensions  
44 x 90 cm

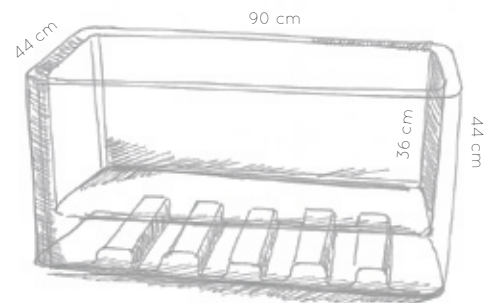
height  
44 cm



Material Compound Polyethylene - Prolonged UV resistant - Frost resistant - Maintain its strength at high temperatures - double Wall: Insulation from frost - Protection for heat (roots can not burn) - Nice finish of the product



WHT BLA RD ORNG BRN LG ANT CAP OG GR



# QUADRIIS 60

Just a bit bigger, just a bit more imposing, so there's more space for more flowers. The Quadris 60 brings more green inside, but also steals the show outside, in the garden or on the terrace. Definitely, the new grey version.





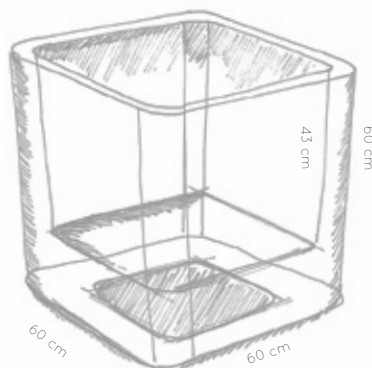
The Otium QUADRI 60 is a high quality double walled polyethylene planter. Otium drainage system makes sure there is adequate drainage for the plants. When planting inside, the drainage system can be closed by using the supplied screw cap with rubber seal.

dimensions  
60 x 60 cm

height  
60 cm



Material Compound Polyethylene - Prolonged UV resistant - Frost resistant - Maintain its strength at high temperatures - double Wall: Insulation from frost - Protection for heat (roots can not burn) - Nice finish of the product



4

CYLINDRUS FP | BASSO FP







BASSO FP, BLACK, BLA





CYLINDRUS FP, BLACK, BLA

# CYLINDRUS FP

Simplicity is a virtue. Just like how an exceptionally beautiful flowerpot can remain discretely in the background. It's a matter of not outdoing natural beauty, but of highlighting it.



The Cylindrus FP is a double walled flowerpot with a drainage system. With its sober design fits into almost any environment. Because Cylindrus with a seating cushion and without as flowerpot, very nice combinations can be made.

diameter  
43 cm

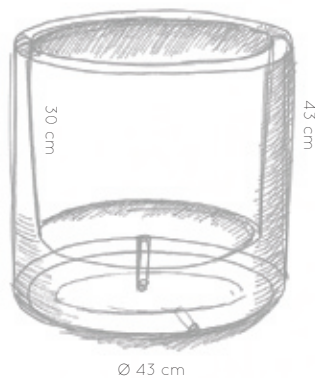
height  
43 cm



Material Compound Polyethylene - Prolonged UV resistant - Frost resistant - Maintain its strength at high temperatures - double Wall: Insulation from frost - Protection for heat (roots can not burn) - Nice finish of the product



WHT BLA RD ORNG BRN LG ANT CAP OG GR



# BASSO FP

Just a touch larger and therefore suitable for low as well as high bloomers. Whatever you plant, the Basso FP emphasizes each flower or plant even more.





The Otium basso fp is high quality double walled polyethylene planter. Otium drainage system makes sure there is adequate drainage for the plants. When planting inside the drainage system can be closed by using the supplied screw cap with rubber seal.

diameter  
80 cm

height  
63 cm



Material Compound Polyethylene - Prolonged UV resistant - Frost resistant - Maintain its strength at high temperatures - double Wall: Insulation from frost - Protection for heat (roots can not burn) - Nice finish of the product



5

OLLA'S

olla 40 . olla 70 . olla 100 . olla 135





OLLA 70, WHITE, WHT

OLLA 100, RED, RD

OLLA 70, RED, RD

OLLA 40, RED, RD





OLLA 70, WHITE, WHT



OLLA 40, BLACK, RED, WHITE, ANTRACITE, ORANGE

# OLLA 40

The smallest one in the Otium family. The OLLA 40 is a standalone hit, but even more impressive in a group. Are you going for a tone-on-tone ensemble or do you want to give your plant corner even more colour?



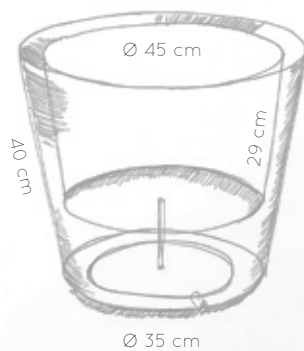
Otium Olla 40 is high quality double walled polyethylene planter. Otium drainage system makes sure there is adequate drainage for the plants. When planting inside the drainage system can be closed by using the supplied screw cap with rubber seal.

diameter  
50 cm

height  
40 cm



Material Compound Polyethylene - Prolonged UV resistant - Frost resistant - Maintain its strength at high temperatures - double Wall: Insulation from frost - Protection for heat (roots can not burn) - Nice finish of the product



# OLLA 70

The OLLA branch of the family offers endless choices. The OLLA 70 is the slightly longer version, making it the perfect companion. Because every little sister needs a big brother.





The Otium olla 70 is a double walled polyethylene pot of high quality. Otium drainage system ensures that there is adequate drainage for the plants. When planting in the drainage system can be closed by using the supplied screw cap with rubber seal.

diameter  
64 cm

height  
70 cm



Material Compound Polyethylene - Prolonged UV resistant - Frost resistant - Maintain its strength at high temperatures - double Wall: Insulation from frost - Protection for heat (roots can not burn) - Nice finish of the product



WHT BLA RD ORNG BRN LG ANT CAP OG GR



# OLLA 100

The higher the pot, the wider it is. Plants that love a little space feel great in the metre-high OLLA. The OLLA 100 is the perfect eyecatcher.



The Otium olla 100 is a double walled polyethylene pot of high quality. The Olla100 with his great size and strength ideal for heavy planting. Otium drainage system ensures that there is adequate drainage for the plants. When planting inside the drainage system can be closed by using the supplied screw cap with rubber seal.

diameter  
64 - 80 cm

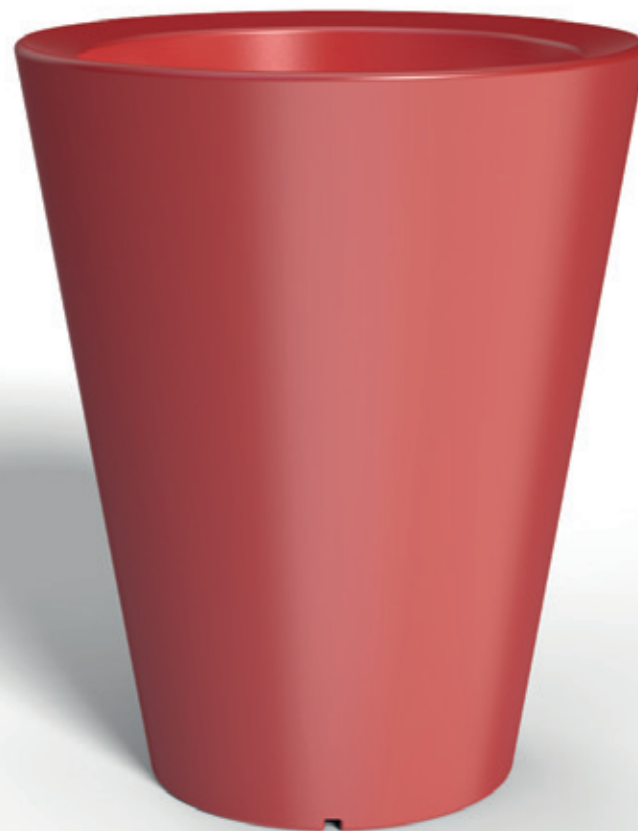
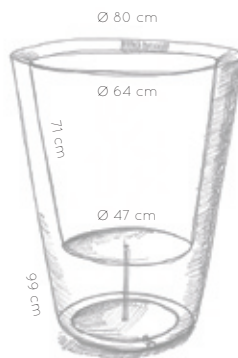
height  
100 cm



Material Compound Polyethylene - Prolonged UV resistant - Frost resistant - Maintain its strength at high temperatures - double Wall; Insulation from frost - Protection for heat (roots can not burn) - Nice finish of the product



WHT BLA RD ORNG BRN LG ANT CAP OG GR



# OLLA 135

A pot that makes a statement – that's the OLLA 135 in a nutshell. A clear, powerful design and a size that cannot be hidden. And why should you?





otium olla 135 Due to its slim shape the Olla135 is the ideal planter for the decoration of a hall or a doorway.

diameter  
54 cm

height  
135 cm



Material Compound Polyethylene - Prolonged UV resistant - Frost resistant - Maintain its strength at high temperatures - double Wall: Insulation from frost - Protection for heat (roots can not burn) - Nice finish of the product



WHT



BLA



RD



ORNG



BRN



LG



ANT



CAP



OG



GR



6

MURUS

murus 27 . murus 90





MURUS 90, WHITE, WHT

MURUS 27, BLACK, BLA





MURUS 27, BLACK, BLA



MURUS 90, WHITE, WHT

# MURUS 27

Do you want to discretely brighten up that wall or that corner of the room with a bit more green? Well, Murus 27 is your partner in crime. Can it be more outstanding? Then you might opt for a Murus collection.



The Otium murus is high quality double walled polyethylene planter. Otium drainage system makes sure there is adequate drainage for the plants. When planting inside the drainage system can be closed by using the supplied screw cap with rubber seal.

The Murus bottom has an opening for extra weight in order to stabilize the pot. With the supplied screw you shut the back opening. We recommend to use sand or gravel as material for extra weight.

dimensions  
27 x 27 cm

height  
80 cm



Material Compound Polyethylene - Prolonged UV resistant - Frost resistant - Maintain its strength at high temperatures - double Wall; Insulation from frost - Protection for heat (roots can not burn) - Nice finish of the product



WHT



BLA



RD



ORNG



BRN



LG



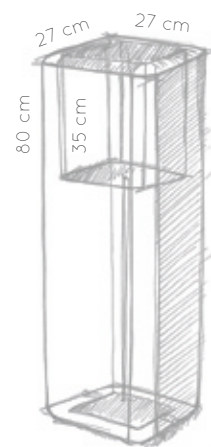
ANT



CAP



OG



# MURUS 90

Wide enough to build your own mini-jungle. Indeed, when you choose high plants, the Murus 90 makes the perfect stylish partition.





The Otium murus is high quality double walled polyethylene planter. Otium drainage system makes sure there is adequate drainage for the plants. When planting inside the drainage system can be closed by using the supplied screw cap with rubber seal.

The Murus bottom has an opening for extra weight in order to stabilize the pot. With the supplied screw you shut the back opening. We recommend to use sand or gravel as material for extra weight.

dimensions  
27 x 90 cm

height  
80 cm



Material Compound Polyethylene - Prolonged UV resistant - Frost resistant - Maintain its strength at high temperatures - double Wall; Insulation from frost - Protection for heat (roots can not burn) - Nice finish of the product



WHT



BLA



RD



ORNG



BRN



LG



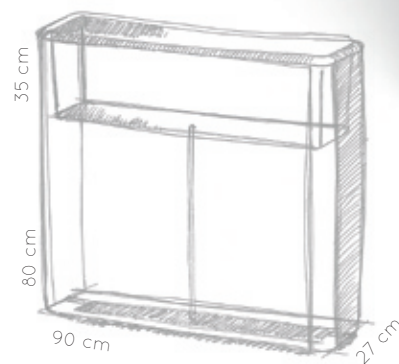
ANT



CAP



OG



7

## OLLA TABLE

olla table vinum . olla table herba







OLLA TABLE HERBA, BLACK, BLA





OLLA TABLE VINUM, WHITE, WHT

OLLA TABLE VINUM, WHITE, WHT

# OLLA TABLE VINUM

A flower pot with a table character or is it the other way around. Meet the Olla Table Vinum. It can be used to lean on during extensive receptions. The heart of the table can easily be filled with ice and keep a nice stock of champagne nicely chilled. Toast in style.



The Otiem OLLA TABLE VINUM is an assembly of the OLLA100, OLLA40 and a table top in cedar wood. Personalize your OLLA TABLE VINUM by making your own color combinations!

diameter  
80 cm

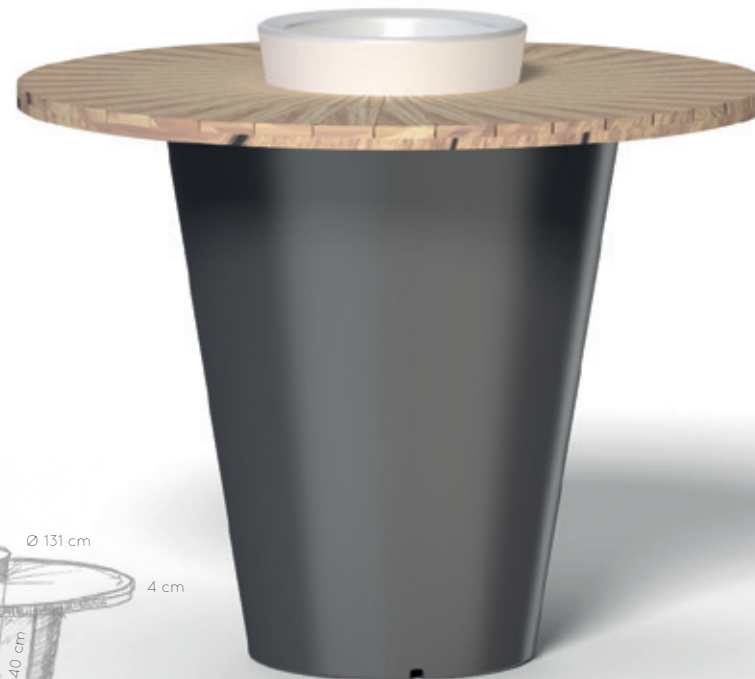
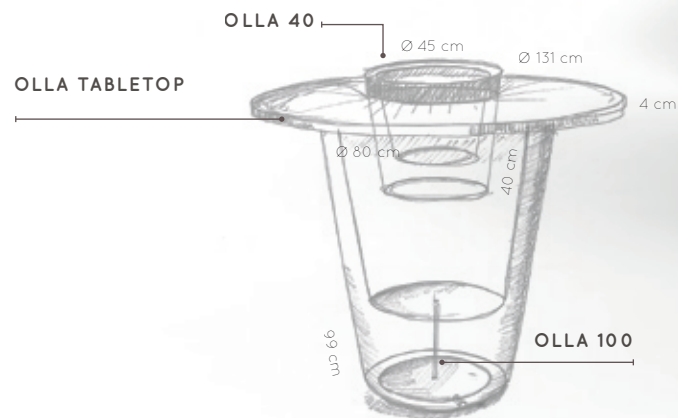
height  
105 cm



Material Compound Polyethylene - Prolonged UV resistant - Frost resistant - Maintain its strength at high temperatures - double Wall: Insulation from frost - Protection for heat (roots can not burn) - Nice finish of the product



WHT BLA RD ORNG BRN LG ANT CAP OG GR



# OLLA TABLE HERBA

Are you more into plants than into champagne? Then you can opt for the Olla Table Herbas and fill the special pot with your favourite plants. The broad wooden edge puts them even more in the spotlight and gives you support while you maintain the plants.





The Otium OLLA TABLE HERBA is an assembly of the OLLA100 and a table top in cedar wood.

diameter  
80 cm

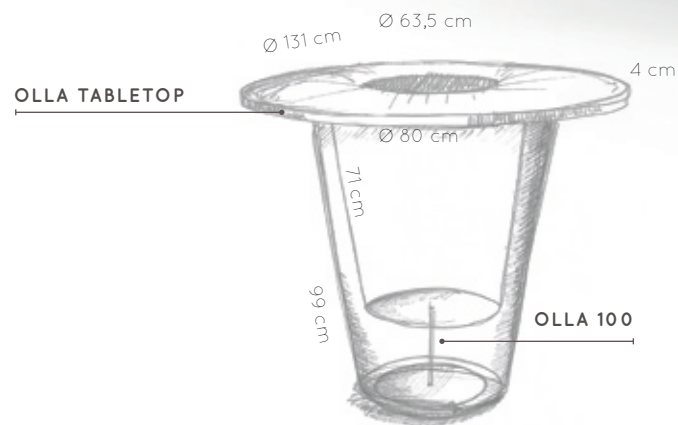
height  
105 cm

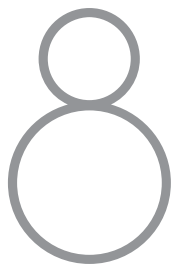


Material Compound Polyethylene - Prolonged UV resistant - Frost resistant - Maintain its strength at high temperatures - double Wall: Insulation from frost - Protection for heat (roots can not burn) - Nice finish of the product



WHT BLA RD ORNG BRN LG ANT CAP OG GR





# CUBUS

cubus wood . cubus pillow . cubus led





CUBUS WOOD, ORANGE, ORNG





CUBUS WOOD, WHITE



CUBUS PILLOW, WHITE

# CUBUS

Do you like taking your time to admire all that splendour of plants and garden beauty? Meet the CUBUS. A seat that not only fits perfectly with your collection of pots, it also comes in a wooden or soft finish.



WOOD



PILLOW

The Otium Cubus can be obtained with a pillow and a wooden plank lining. Besides the 5 colors of cube itself there are four types of pillows available black, white, red and a pillow with two colors black & white.

dimensions  
43 x 43 cm

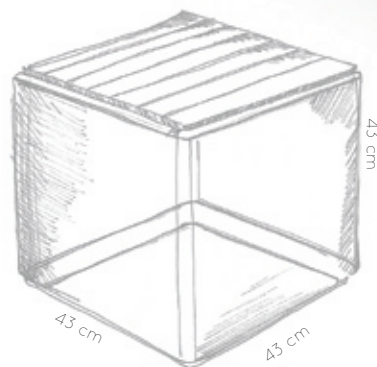
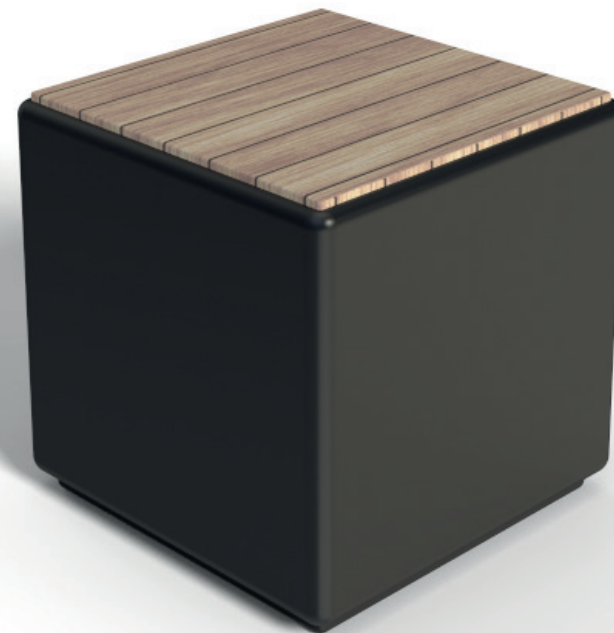
height  
43 cm



Material Compound Polyethylene - Prolonged UV resistant - Frost resistant - Maintain its strength at high temperatures - double Wall: Insulation from frost - Protection for heat (roots can not burn) - Nice finish of the product



FINISH



# CUBUS LED

Need light? This Cubus makes it comfortable and lightens its surroundings at the same time. A real focus-puller!





The Otium Cubus LED contains 6 colors you can easily change with the remote controler. Moreover you can have different running programs to set the color to change automatically.

dimensions  
43 x 43 cm

height  
43 cm



Material Compound Polyethylene - Prolonged UV resistant - Frost resistant - Maintain its strength at high temperatures - double Wall: Insulation from frost - Protection for heat (roots can not burn) - Nice finish of the product



WHT



BLA



RD



ORNG



BRN



LG



ANT



CAP

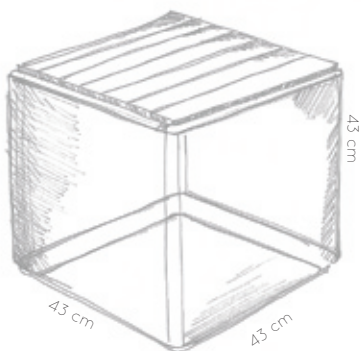


OG

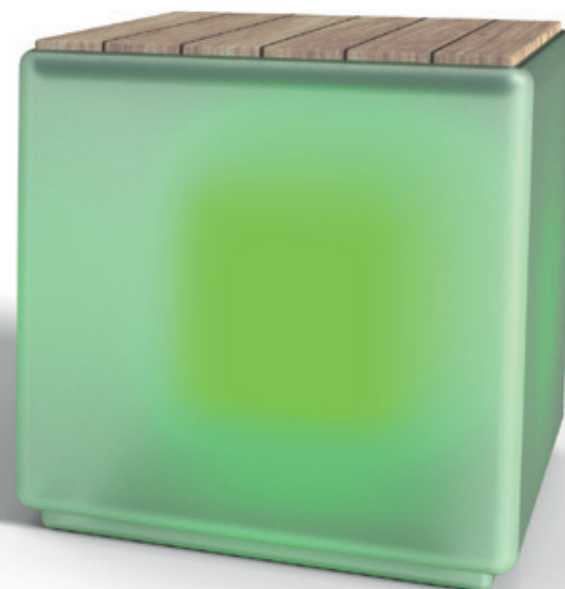


GR

FINISH



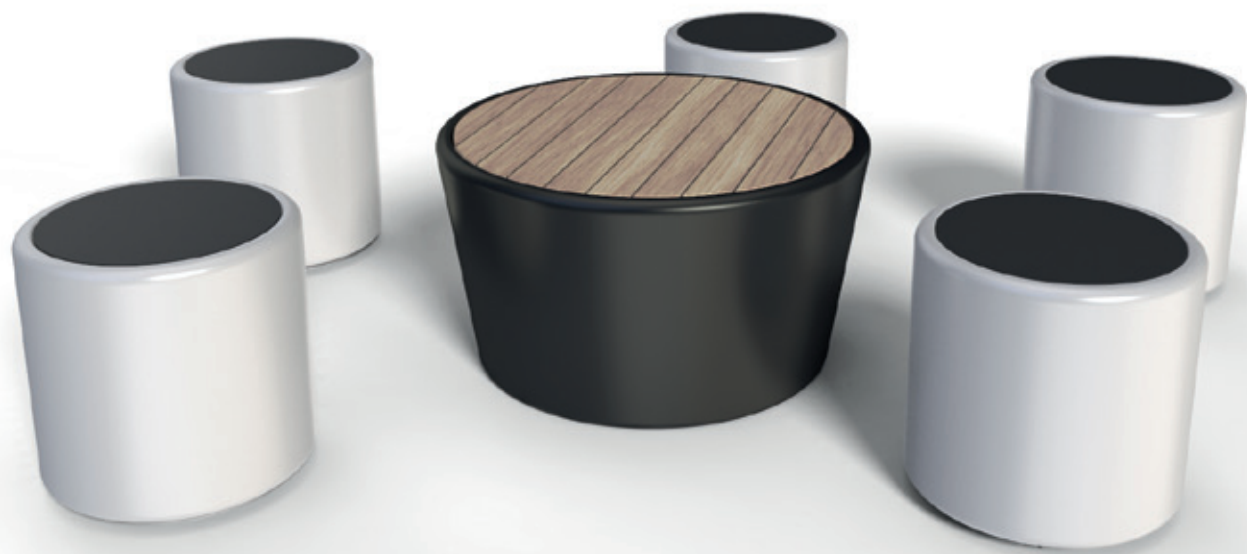
Light: RGB LED  
Voltage: 110v - 240v , DC: 5v  
Colors: 16 Color Change  
Waterproof: IP 54  
Has Passed: CE,UL,ROHS  
12 hours charge for first use.



9

## CYLINDRUS | BASSO

CYLINDRUS wood. CYLINDRUS pillow | basso wood





BASSO, ANTRACITE, ANT + WOOD

CYLINDRUS, BLACK, BLA + PILLOW BLACK





CYLINDRUS, BLACK, BLA + WOOD

# CYLINDRUS

Can it be a bit softer, a bit rounder, a bit more feminine? The Cilindrus is the Cubus's proud sister. Same principle, but a softer design.



WOOD



PILLOW

The Otium Cylindrus addition to its cool looks a very practical aspect with its storage space. Furthermore he has 5 basic colors and pillows in three different colors.

(many possible combinations)

dimensions  
43 x 43 cm

height  
43 cm

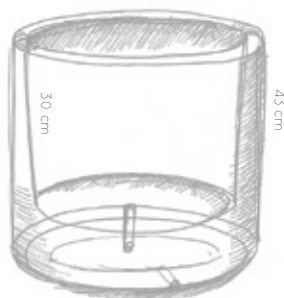


Material Compound Polyethylene - Prolonged UV resistant - Frost resistant - Maintain its strength at high temperatures - double Wall: Insulation from frost - Protection for heat (roots can not burn) - Nice finish of the product



WHT BLA RD ORNG BRN LG ANT CAP OG GR

FINISH



Ø 43 cm



# BASSO

With each seat goes a table. Basso takes up that function splendidly. So, no more glasses on the floor, which you knock over as soon as you move a foot. As of now, you meet around the Basso.





The BASSO is the ideal complement to otium Cubus and Cylindrus. This low table with storage or footstool with storage comes in handy everywhere.

diameter  
80 cm

height  
63 cm



Material Compound Polyethylene - Prolonged UV resistant - Frost resistant - Maintain its strength at high temperatures - double Wall: Insulation from frost - Protection for heat (roots can not burn) - Nice finish of the product



WHT



BLA



RD



ORNG



BRN



LG



ANT



CAP



OG

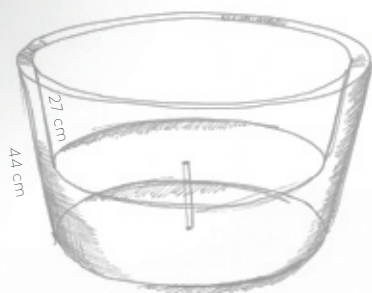


GR

FINISH



Ø 80 cm



Ø 63 cm



# TECHNICAL INFO

P.	NAME	TOP DIAMETER	DIAMETER BOTTOM	HEIGHT X WIDTH	COLORS	FINISHING	MATERIAL
12	Otium Pendulum square	x	x	39 cm x 42 cm x 37 cm		x	Compound Polyethylene
14	Otium Pendulum long	x	x	39 cm x 75 cm x 49 cm		x	Compound Polyethylene
20	Otium Amphora 45	x	x	39 cm x 42 cm x 37 cm		x	Compound Polyethylene
21	Otium Amphora 75	x	x	39 cm x 75 cm x 49 cm		x	Compound Polyethylene
26	Otium Quadris 40	x	x	44 cm x 44 cm		x	Compound Polyethylene
28	Otium Quadris 60	x	x	60 cm x 60 cm		x	Compound Polyethylene
30	Otium Quadris 40 Long	x	x	45 cm x 44 cm x 90 cm		x	Compound Polyethylene
36	Otium Cylindrus Fp	43 cm	43 cm	43 cm x 43 cm		x	Compound Polyethylene
38	Otium Basso Fp	80 cm	63 cm	44 cm x 80 cm		x	Compound Polyethylene
44	Otium Olla 40	50 cm	35 cm	40 cm x 50 cm		x	Compound Polyethylene
46	Otium Olla 70	64 cm	40 cm	70 cm x 64 cm		x	Compound Polyethylene
48	Otium Olla 100	80 cm	64 cm	100 cm x 80 cm		x	Compound Polyethylene
50	Otium Olla 135	55 cm	40 cm	135 cm x 55 cm		x	Compound Polyethylene
56	Otium Murus 90	x	x	80 cm x 90 cm x 27 cm		x	Compound Polyethylene
58	Otium Murus 27	x	x	80 cm x 27 cm x 27 cm		x	Compound Polyethylene
64	Otium Olla Vinum	80 cm	64 cm	105 cm x 80 cm			Compound Polyethylene
66	Otium Olla Herba	80 cm	64 cm	105 cm x 80 cm			Compound Polyethylene
72	Otium Cubus Pillow/ Wood	x	x	43 cm x 43 cm			Compound Polyethylene
74	Otium Cubus Led	x	x	43 cm x 43 cm			Compound Polyethylene
80	Otium Cylindrus	43 cm	43 cm	43 cm x 43 cm			Compound Polyethylene
82	Otium Basso	80 cm	63 cm	44 cm x 80 cm			Compound Polyethylene

# MORE INFO

PLEASE SEND ME MORE INFORMATION ABOUT FOLLOWING PRODUCTS:

Otium Pendulum square	<input type="checkbox"/>
Otium Pendulum long	<input type="checkbox"/>
Otium Amphora 45	<input type="checkbox"/>
Otium Amphora 75	<input type="checkbox"/>
Otium Quadris 40	<input type="checkbox"/>
Otium Quadris 60	<input type="checkbox"/>
Otium Quadris 40 Long	<input type="checkbox"/>
Otium Cylindrus Fp	<input type="checkbox"/>
Otium Olla 40	<input type="checkbox"/>
Otium Olla 70	<input type="checkbox"/>
Otium Olla 100	<input type="checkbox"/>
Otium Olla 135	<input type="checkbox"/>
Otium Olla Herba	<input type="checkbox"/>
Otium Olla Vinum	<input type="checkbox"/>
Otium Basso Fp	<input type="checkbox"/>
Otium Murus 90	<input type="checkbox"/>
Otium Murus 27	<input type="checkbox"/>
Otium Cubus Pillow / Wood	<input type="checkbox"/>
Otium Cubus Led	<input type="checkbox"/>
Otium Cylindrus	<input type="checkbox"/>
Otium Basso	<input type="checkbox"/>



title:

Name:

adress:

city:

postal number:

country:

phone:

e-mail:











**koberg**

Koberg BV  
Klappolder 178-180  
2665 MP Bleiswijk

T: +31 (0) 105 296555  
F: +31 (0) 105 296550  
E: [onno@koberg.nl](mailto:onno@koberg.nl)