



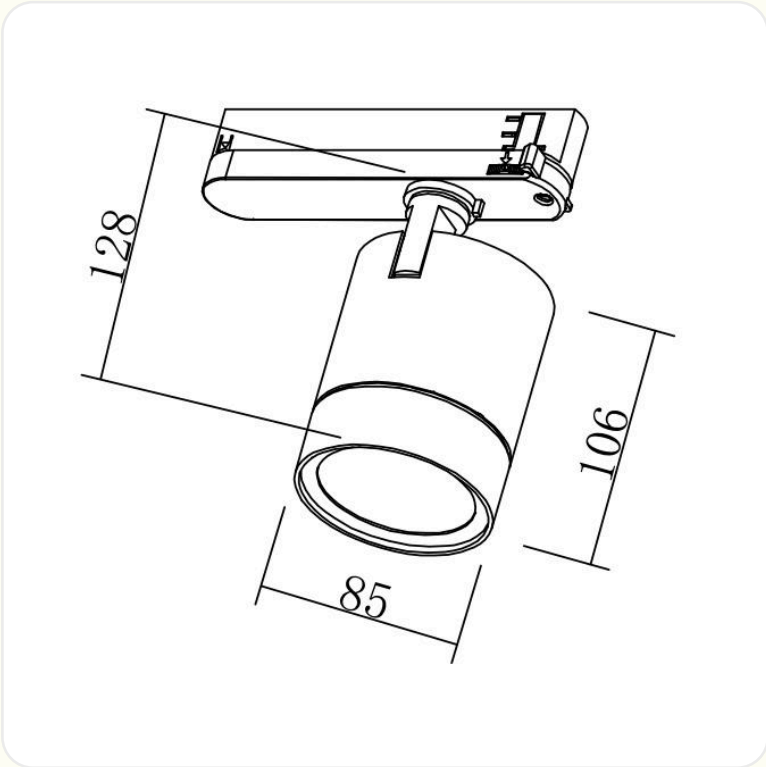
koberg

Product Catalogue

Specifications & more
www.koberg.nl

Tracklight Strong

The Tracklight Strong is typically used for larger areas, such as large green walls and planters. It is also very suitable for illuminating trees.



Consumption:	20 watt
Exposed:	4-5 m²
Dimension:	106 x 85 mm
Color:	Black or white
PPF:	99 µmol
DALI:	Optional
Lens angle:	45°
Attachment:	GA (C) 69 (3-phase)
Waterproof:	No





Tracklight

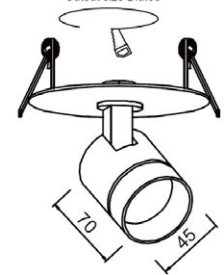
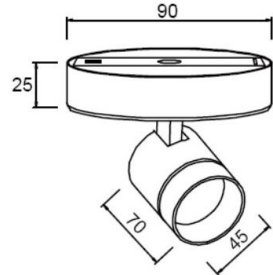
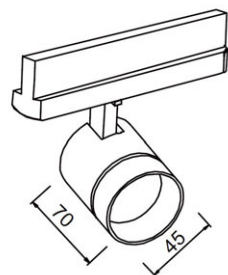
Track lighting is typically used for larger areas, such as large green walls and large planters. The extra ring focuses the light. Ideal for narrow planters or for greater distances. These lamps can also be supplied as a freestanding model with a surface-mounted base or as a recessed model.



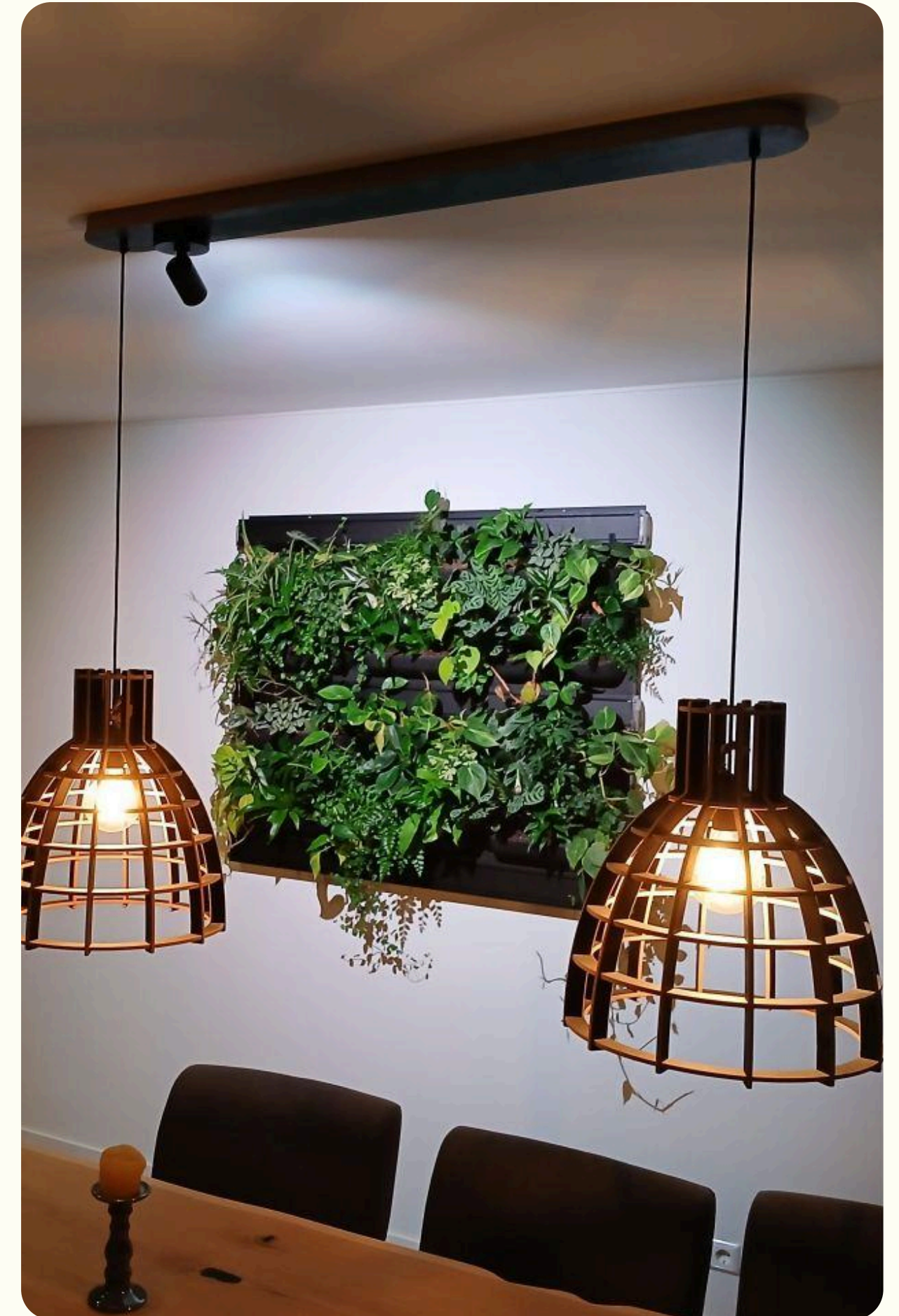
Consumption:	20 watt
Exposed:	3-4 m ²
Dimension:	182 x 75,5 mm
Color:	Black or white
PPF:	90 µmol
DALI:	Optional
Lens angle:	60°
Attachment:	<ul style="list-style-type: none"> • GA (C) 69 (3 phase) • Mounting foot • Recessed
Waterproof:	No

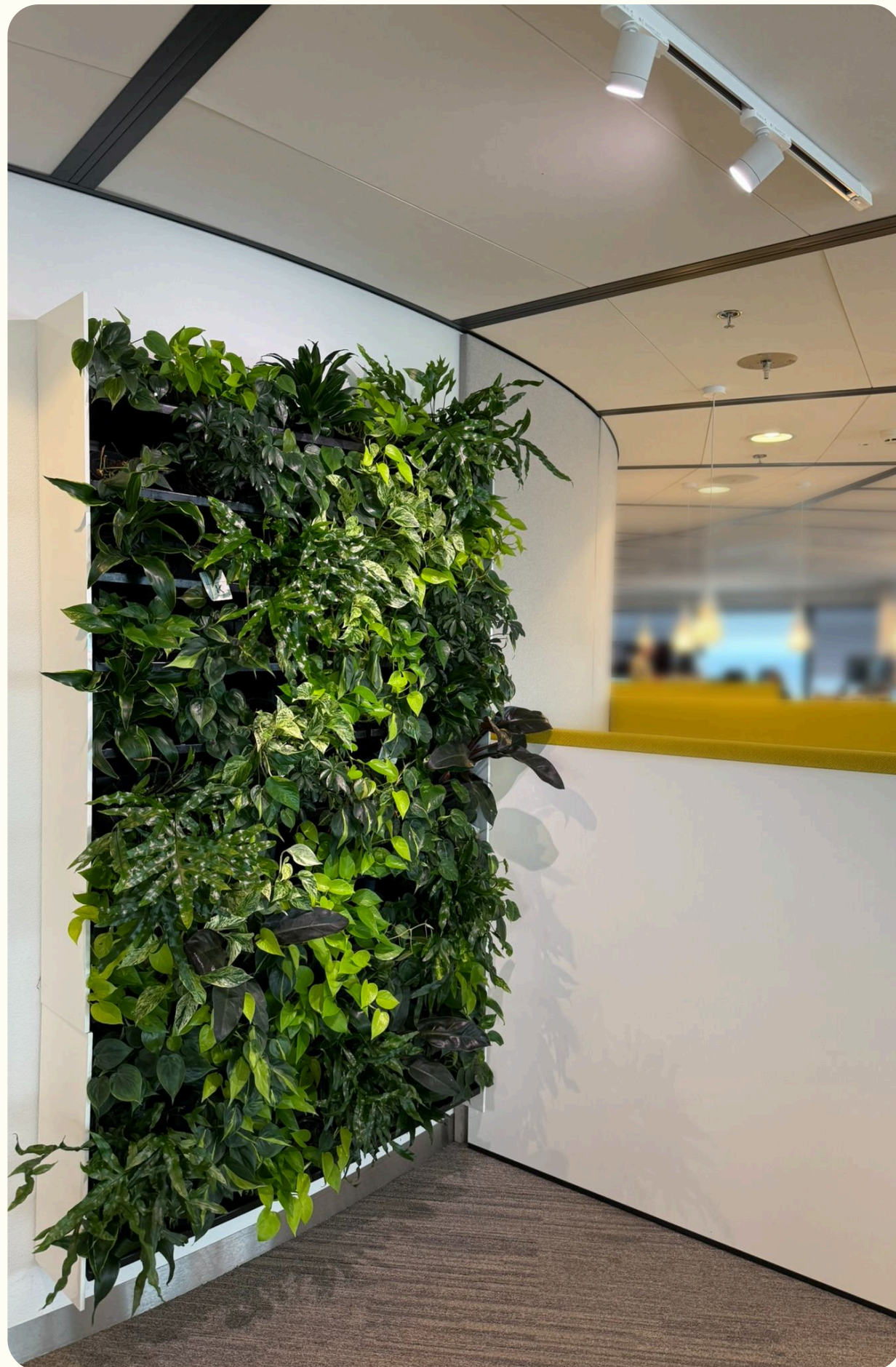
Spotlight Extra Small

This small lamp consumes only 6W and is often used for smaller planters, plant paintings, or small green walls. This small lamp is also very suitable for individual plants and is available in 3 different connection options.



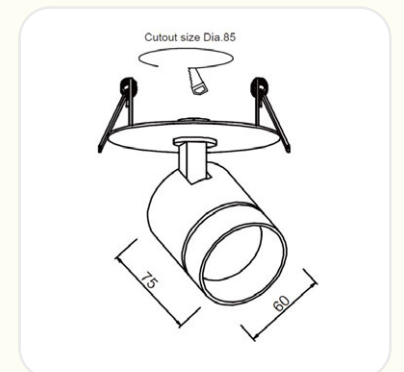
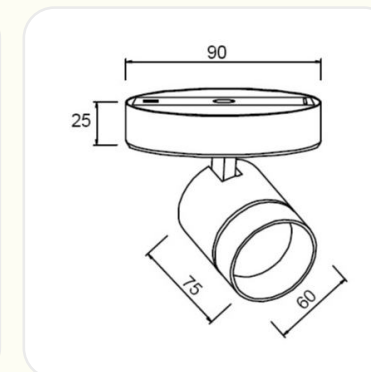
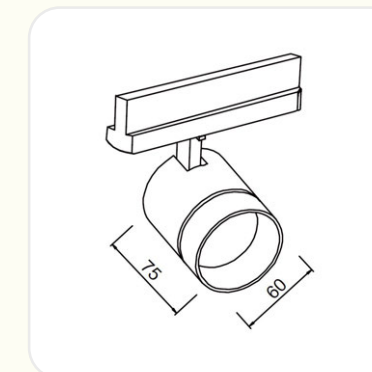
Consumption:	6 watt
Exposed:	1,5 m ²
Dimension:	70 x 45 mm
Color:	Black or white
PPF:	30 µmol
DALI:	Optional
Lens angle:	60°
Attachment:	<ul style="list-style-type: none">• Track GA(C)69 - 3 phase• Mounting foot• Recessed
Waterproof:	No





Spotlight Small

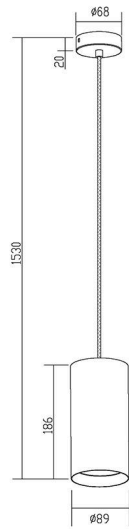
This lamp consumes only 6W and is often used for smaller planters, plant paintings, or small green walls. This small lamp is also very suitable for individual plants and is available in 3 different connection options.



Consumption:	6 watt
Exposed:	2 m ²
Dimension:	75 x 60 mm
Color:	Black or white
PPF:	30 µmol
DALI:	Optional
Lens angle:	60°
Attachment:	<ul style="list-style-type: none"> • Track GA(C)69 - 3 phase • Mounting foot • Recessed
Waterproof:	No

Pendant

The pendant is a lamp with the same light output as the tracklight strong. Because it hangs from a wire, it is often used in rooms with high ceilings, or where the model fits in well with the rest of the interior.



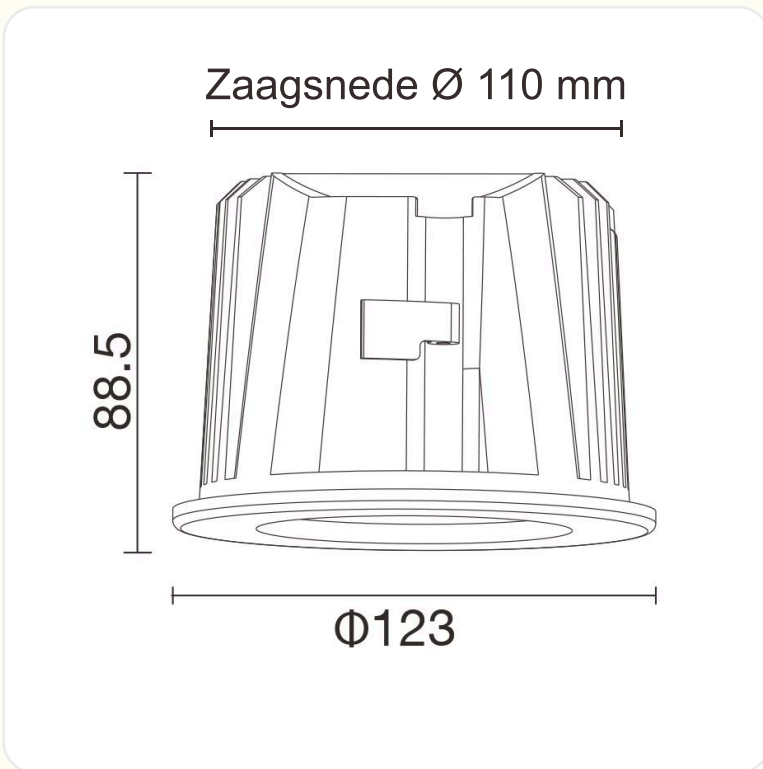
Consumption:	20 watt
Exposed:	3-4 m ²
Dimension:	153 x 89 mm
Color:	Black or white
PPF:	90 µmol
DALI:	Optional
Lens angle:	60°
Attachment:	<ul style="list-style-type: none">• Mounting foot• GA69• Track GA(C)69 - 3 phase
Waterproof:	No





Recessed Waterproof

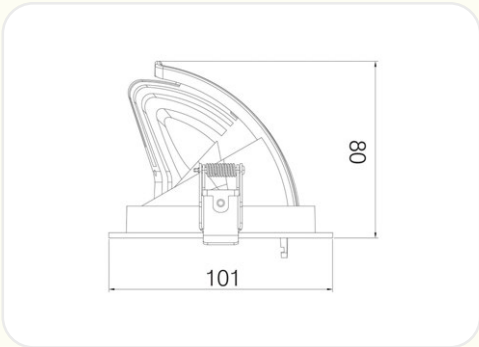
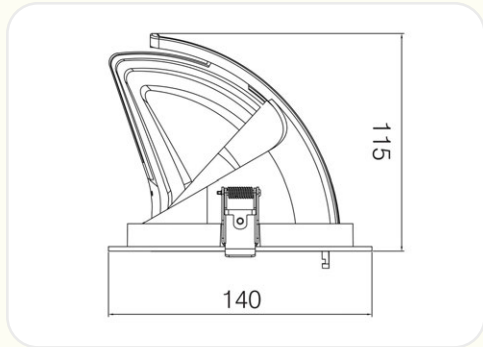
The waterproof recessed spotlight was originally used in damp areas, such as swimming pools. However, thanks to its sleek design, it is also often used in other areas.



Consumption:	20 watt
Exposed:	3 m ²
Dimension:	88,5 x 123 mm
Color:	Black or white
PPF:	66 µmol
DALI:	Optional
Lens angle:	60°
Attachment:	Recessed
Waterproof:	Yes

Recessed Banana

This recessed spotlight is ideal for illuminating green walls and planters. It is also excellent for illuminating individual plants. Thanks to the tiltable light source, the light can be directed precisely where it is needed. The spotlight is available in two versions: 20 watts for larger applications and 6 watts for smaller situations.



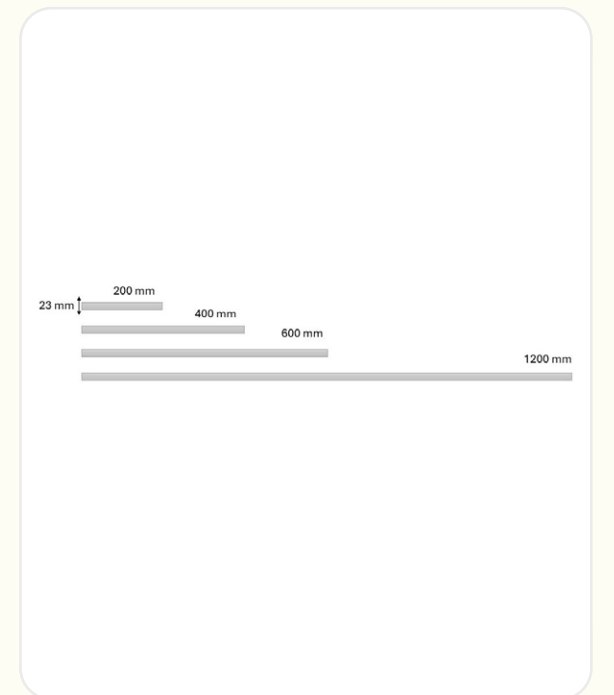
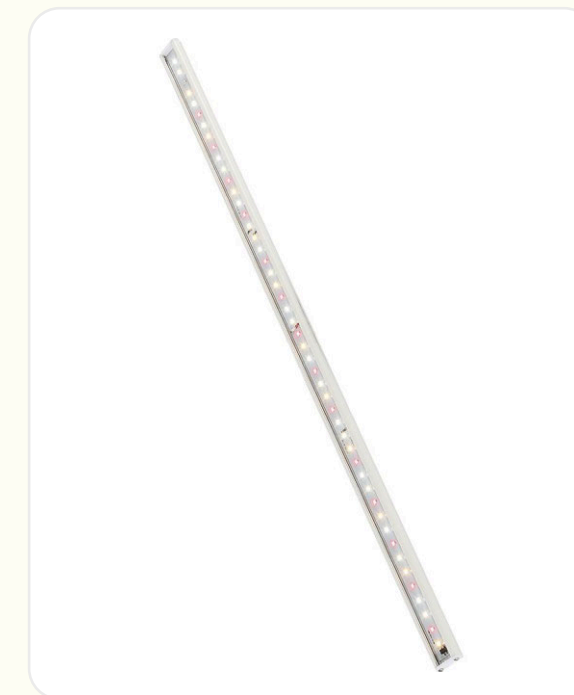
	Small	Large
Consumption:	6 watt	20 watt
Exposed:	2 m ²	4 m ²
Dimension:	80 x 101 mm	140 x 115 mm
Color:	Black or white	Black or white
PPF:	30 µmol	96 µmol
DALI:	Optional	Optional
Lens angle:	46°	46°
Attachment:	Recessed	Recessed
Waterproof:	No	No





Medium Linear

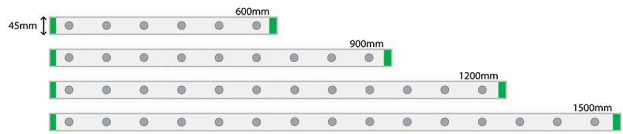
Very slim, streamlined lamps. Thanks to their sleek and narrow design, they are ideal for integration into furniture or in situations where the lighting needs to be closer to the plant. The carefully balanced light spectrum makes it possible to place the lamps close to the leaves without risk of burning or growth stress. These lamps are also available in IP67 on request.



Consumption:	10 - 20 watt
Exposed:	Length x 30 cm
Dimension:	20, 40, 60 en 120 cm
Color:	Black or white
PPF:	25 - 50 μmol
DALI:	Optional
Lens angle:	140°
Attachment:	Multiple options
Waterproof:	Optional

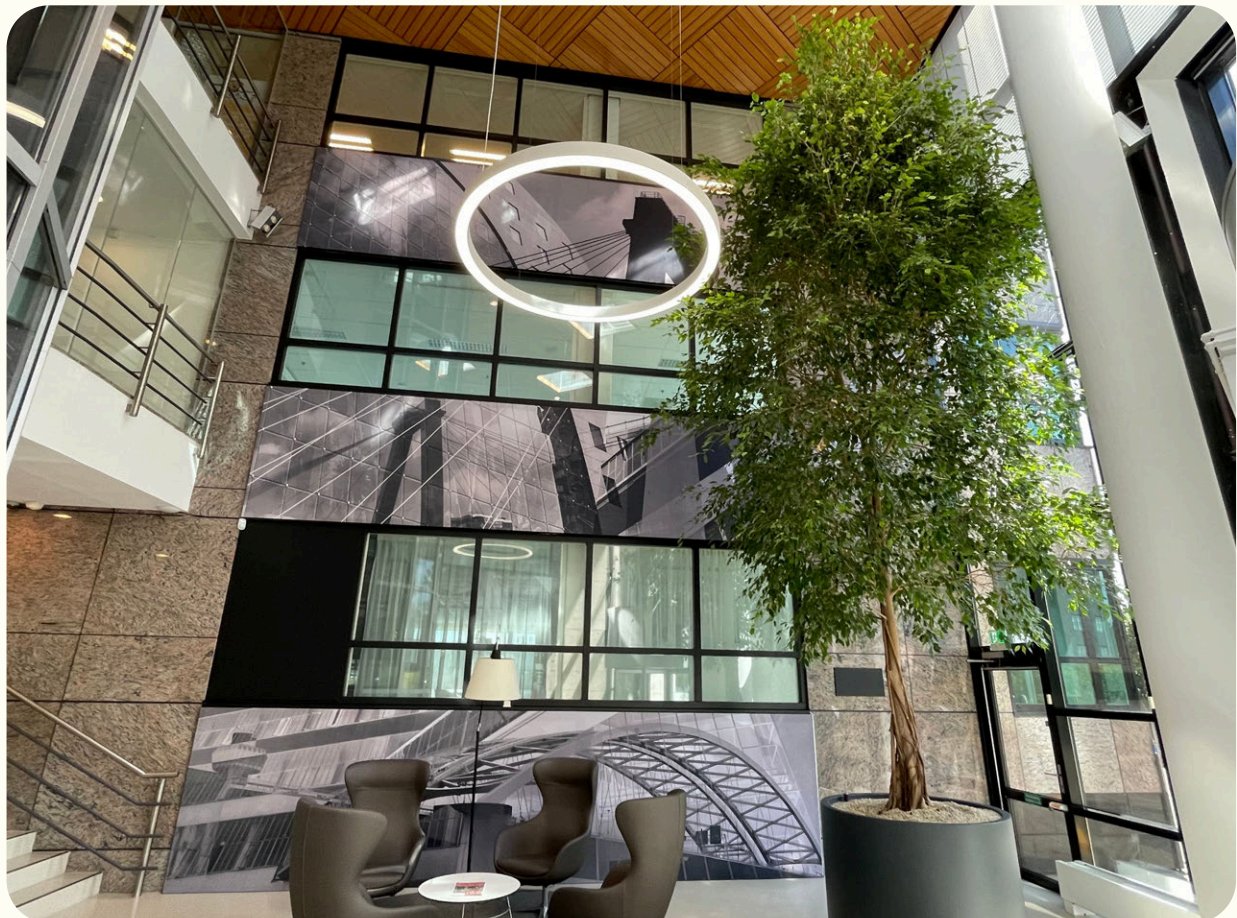
Living Wall Linear

Long, thin lamps that are ideal for green walls in sleek or industrial environments. The lamps can also be supplied with IP67 on request so that they can be used in damp areas.



Consumption:	20/30/40/50 watt
Exposed:	Length x 250 cm
Dimension:	60/90/120/150 cm
Color:	Black, white, or aluminum
PPF:	60/90/120/150 μmol
DALI:	Optional
Lens angle:	30 -120°
Attachment:	Multiple options
Waterproof:	Yes





Long Distance

These very powerful lamps are suitable for illuminating plants and trees from a greater distance. Ideal in situations where it is not possible to mount the lighting close to the plants, for example in rooms with very high ceilings. These lamps can be mounted at great heights above the foliage and still provide sufficient light for trees and plants, while easily illuminating a large area. On request, these lamps can also be supplied in a waterproof version.

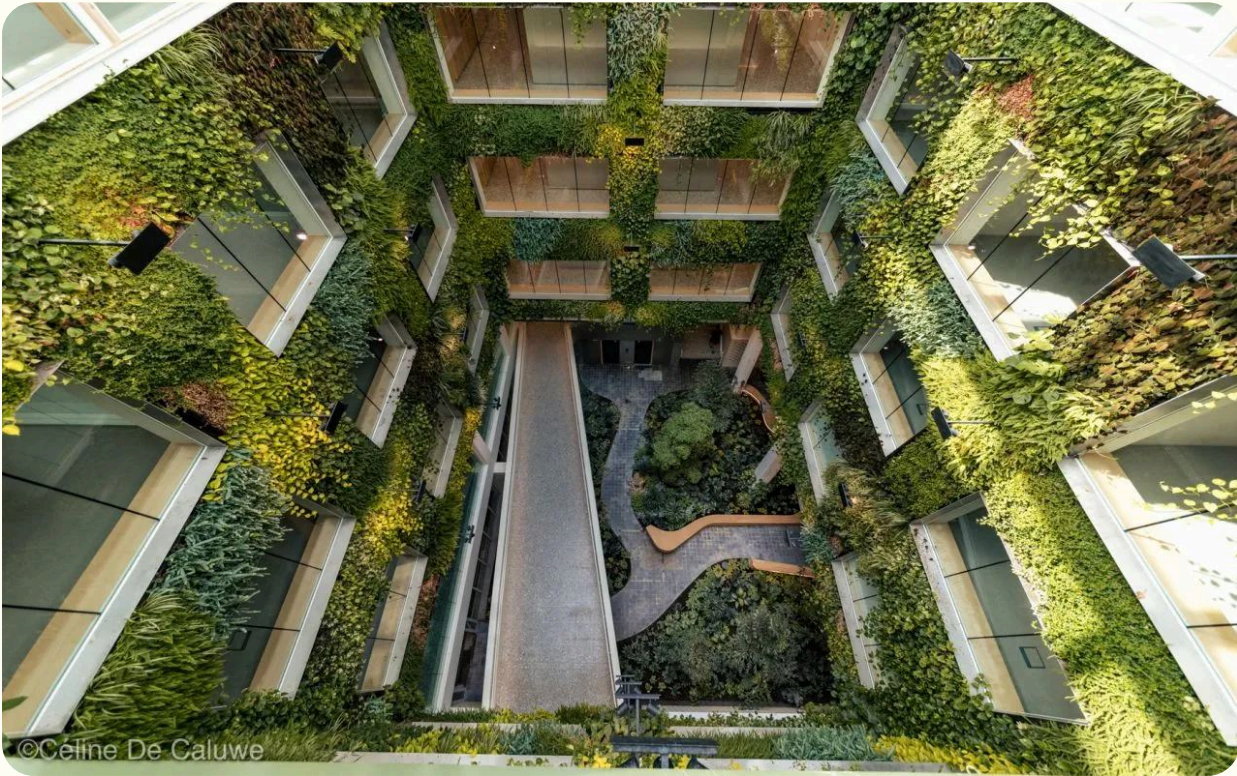
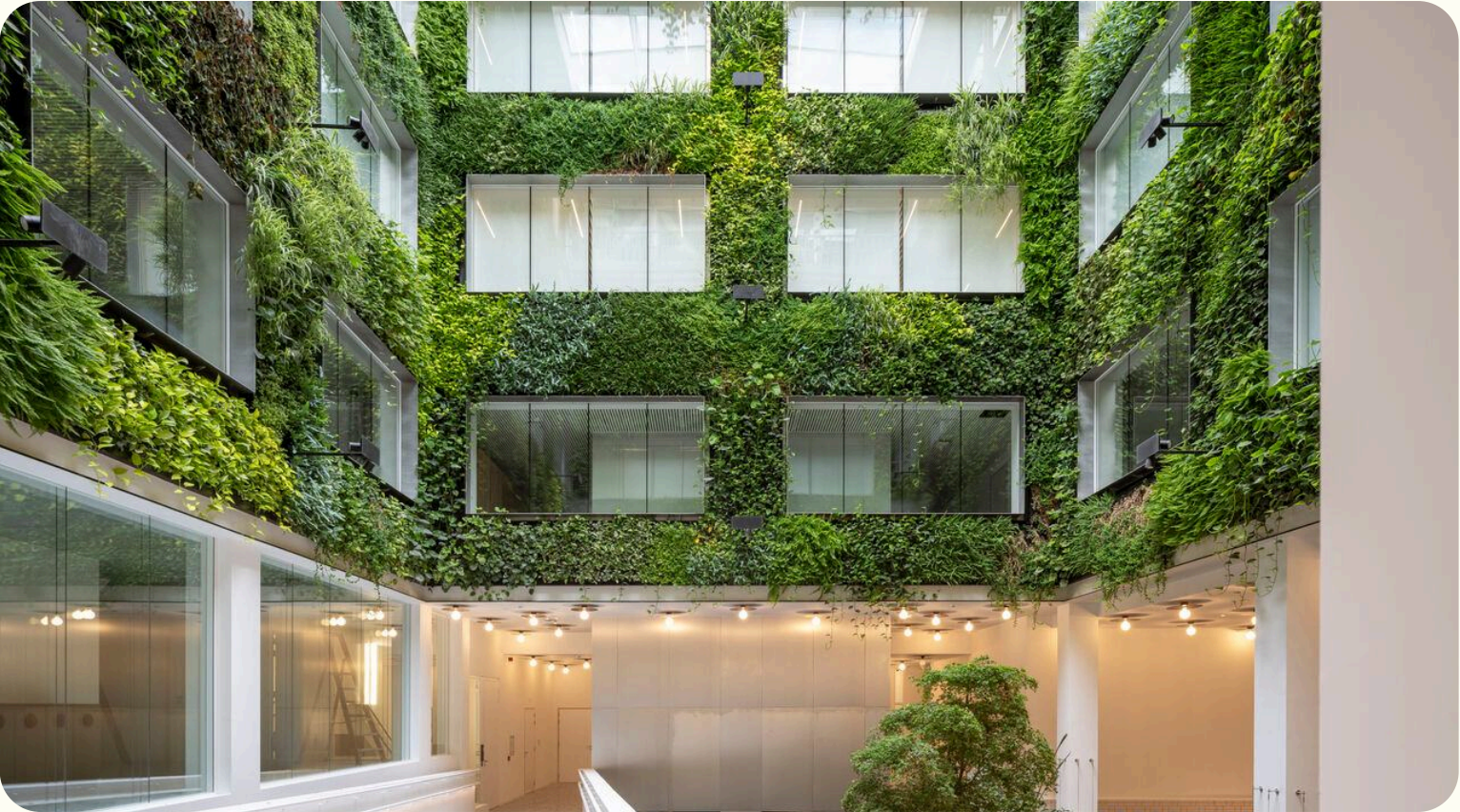


Consumption:	150/250/350/700 watt
Exposed:	Tot 25 m ²
Dimension:	17 x 160 x 260/302/555 mm
Color:	aluminum
PPF:	585/925/1254/2584 μmol
DALI:	Optional
Lens angle:	90 - 120°
Attachment:	Ring
Waterproof:	Yes

Freestanding poles and wall-mounted arms

In locations where ceiling or wall installation is not possible or not desired, our freestanding lighting poles and wall-mounted lighting arms provide a practical solution for plant lighting. Both systems are fully customized in height, color, and number of fixtures, tailored to the specific light requirements of the plants. This allows us to create an optimal lighting setup for each planting situation.

Consumption:	Custom made
Exposed:	Custom made
Dimension:	Custom made
Color:	Custom made
PPF:	Custom made
DALI:	Custom made
Lens angle:	Custom made
Attachment:	Custom made
Waterproof:	Custom made



koberg

A thick horizontal line is positioned below the text 'koberg'. The line is composed of two segments: a shorter dark blue segment on the left and a longer magenta segment on the right, which extends to the right edge of the 'g'.

www.koberg.nl